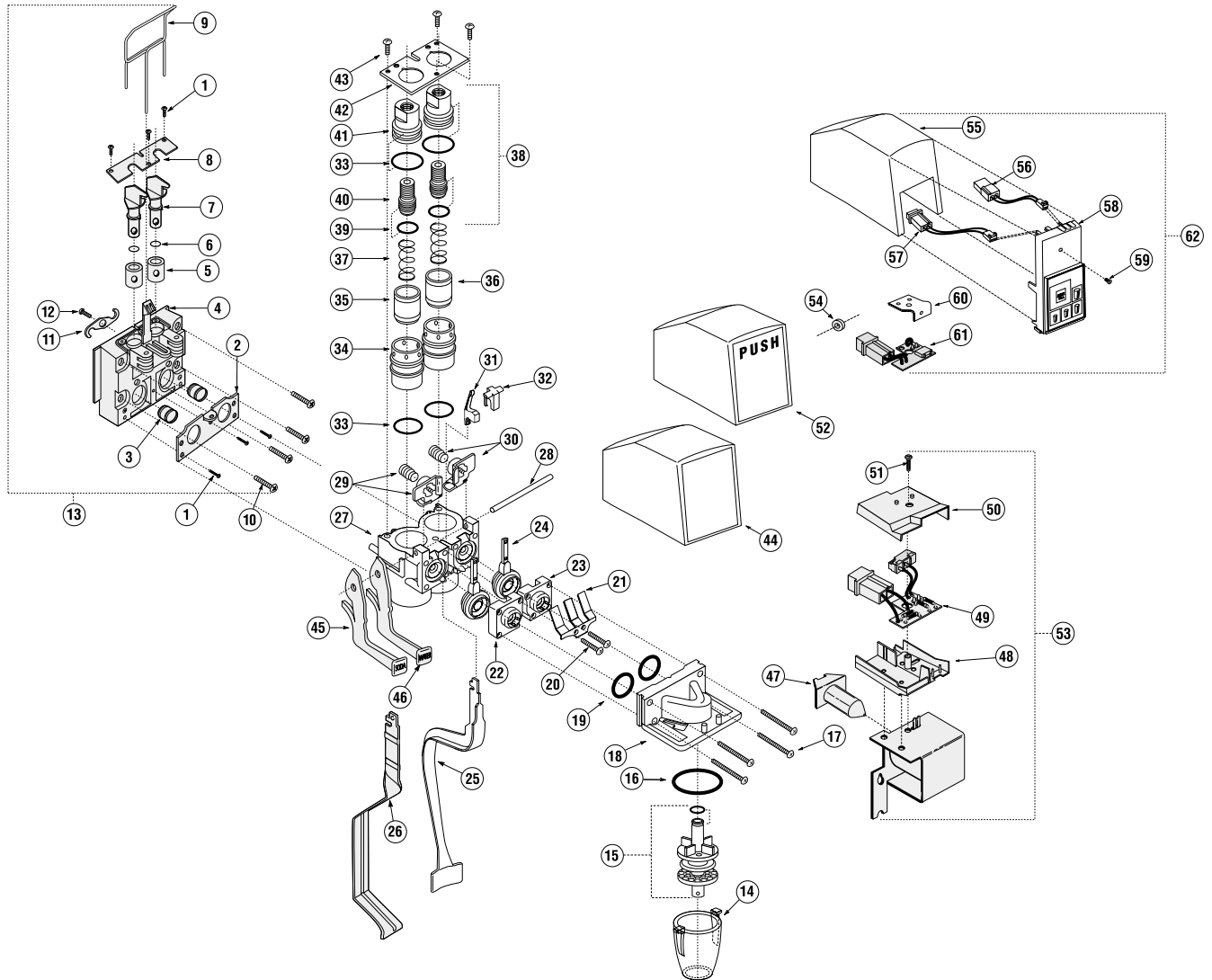





Flomatic 424 Post-mix Valve



REF NO.	PART NO.	DESCRIPTION	REF NO.	PART NO.	DESCRIPTION	REF NO.	PART NO.	DESCRIPTION	REF NO.	PART NO.	DESCRIPTION
1	553-00	Screw 6x7/16 PH SS	19	509	O-ring (112)	38	642-00	Brix adjustment assy complete	57	817-03	Plug assy - 3 pin/2 wire
2	568*	SS Retainer - stem seal	20	510	Screw 4-40x5/8 SS	39	551	O-ring (012)	58	832-01	Portion control module 4-cup
3	528	Quad seal - stem	21	511	Spring pallet retainer	40	607*	Screw - brix adjustment	59	805	Screw 6-32x5/8 SS
4	562-80*	Mtg. block blank - 0.380" inlet	22	512-01 - B	Orifice cap - left	41	609*	Nut - brix adjustment	60	802-01	Portion control bracket
-	562-72*	Mtg. block blank - 0.372" inlet	23	513-01 - B	Orifice cap - right	42	610-04	Retainer plate (14G)	61	769-P25	Printed circuit board - pc shunt
5	527*	Boot seal - shut off	24	515	Pallet	43	611-01	Screw 6-32x1/4 SS	62	P25-1500	Portion control conversion Kit
6	543	O-ring (010)	25	516-09	Lever molded sanitary	44	1521	Cover - black	<small>not shown 1094 TRUCK Parts kit</small>		
7	526*	Plug - shut off	26	516-06	Lever SS sanitary	45	1027-S	Add-a-Lever "soda"	<small>not shown 1094 STOCK Parts stock kit</small>		
8	567*	SS Retainer - shut off plug	27	600-06-B	Flow control base	46	1027-W	Add-a-Lever "water"	COMPLETE VALVE ASSEMBLIES		
9	538-04	Latch pin - three point	28	524-02	Pivot pin	47	763-25	Solenoid coil (not sold separately)	424-CF-E25-1521	Valve - electric lever	
10	563-03	Mounting bolt - 10-32x7/8 SS	29	521-01	Actuator assy left	48	765-01*	Plunger - single coil	424-CF-S25-1525	Valve - self-service	
11	564	S-clip	-	523	Screw actuator adjustment	49	769-U25	Base - convertible switch hsg	424-CF-P25-1500	Valve - portion control	
12	565-02	Screw - 8x1/2 PH SS	30	522-01	Actuator assy right	50	766-01*	Printed circuit board - switch assy	<i>Inquire about other 424 options.</i>		
13	372-Q	Complete assembly - 0.372" inlet	31	517-04	Retainer cap electric	51	2611	Cover - convertible switch hsg	<i>*Parts not sold separately</i>		
-	380-Q	Complete assembly - 0.380" inlet	32	517-00	Retainer cap manual	52	1525	Screw 6-32x5/8 SS			
14	501-24	Nozzle clear	33	608	O-ring (017)	53	770-E25	Solenoid assy complete			
15	504-10	Diffuser assy w/ o-ring	34	602-02	Cylinder - ceramic	54	804	Bushing actuator spacer (for non-lever valves)			
-	543	O-ring (010)	35	604-02	Piston - soda	55	1500	Cover portion control			
16	500	O-ring (021)	36	603-02	Piston - syrup	56	817-02	Plug assy - 2 pin/2 wire			
17	505	Screw 4-40x1 SS	37	605-01	Spring - brix adjustment						
18	507-26-B	Diffuser block									